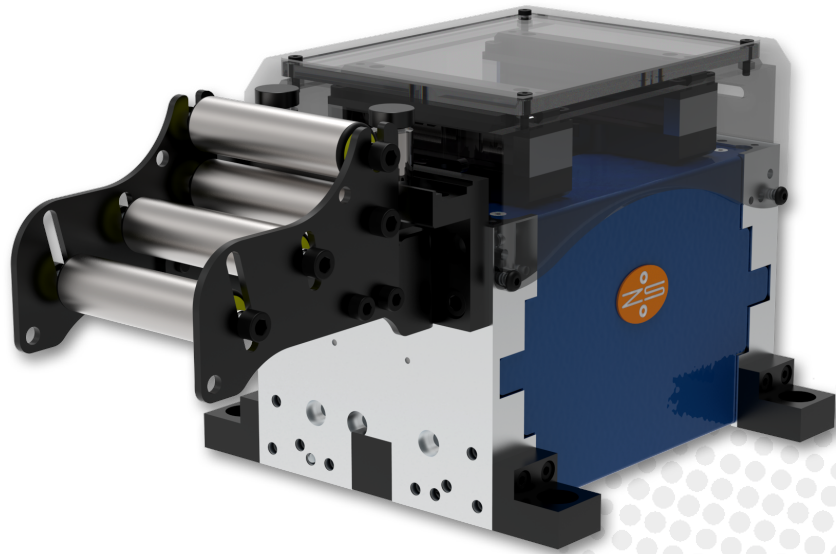




ELECTRICAL DOUBLE GRIPPER FEED EZ KX 080

Models: EZ KX-C 080 | EZ KX-D 080



ACCURATE

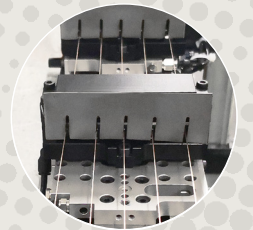
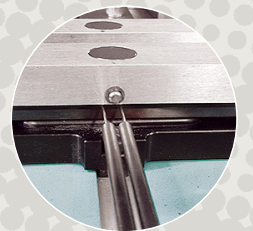
- Precision mechanics and high-tech materials for highest accuracy
- Double precision linear motor

VERSATILE INSTALLATION

- Compact design with minimal installation dimensions
- Available in 3 unit lengths: Compact (C), Double (D), Extended (E)
- Cable Connector Box: separate or on device
- Variable infeeds: basket with double rolls, inlet plate, wire inlet

VERSATILE USE

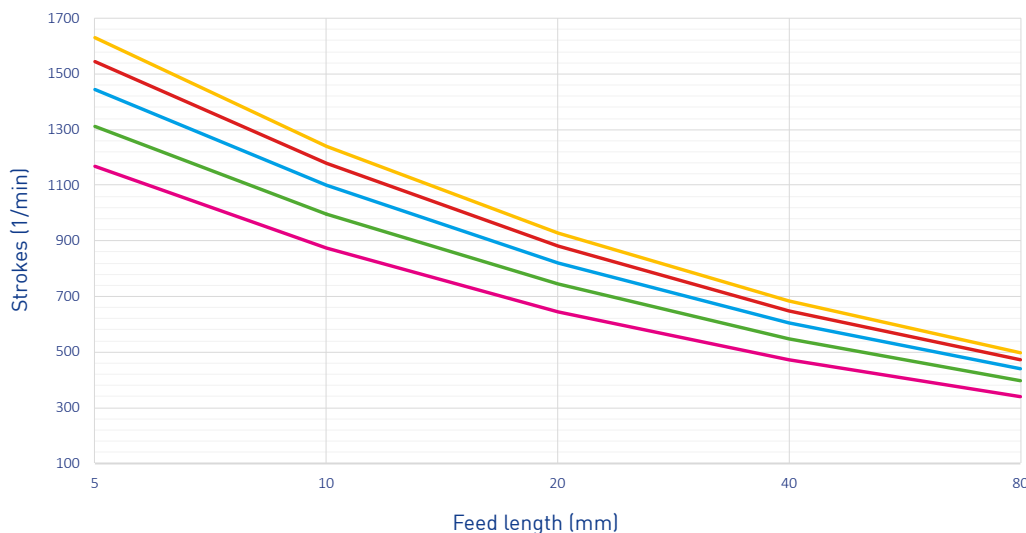
- Prepared for additional clamps, better wire guiding, considerable clamping force
- Various tailor made clamping, gripping and guiding options
- Good visibility into gripper chamber for easy threading
- Threading help button (material insertion without operating the control)
- Adaptable roll basket to fit material properties



ELECTRICAL DOUBLE GRIPPER FEED EZ KX 080



PERFORMANCE



Performance curves (examples)*

Loop weight / Number of moving clamps

0 kg / 2 clamps

0.5 kg / 2 clamps

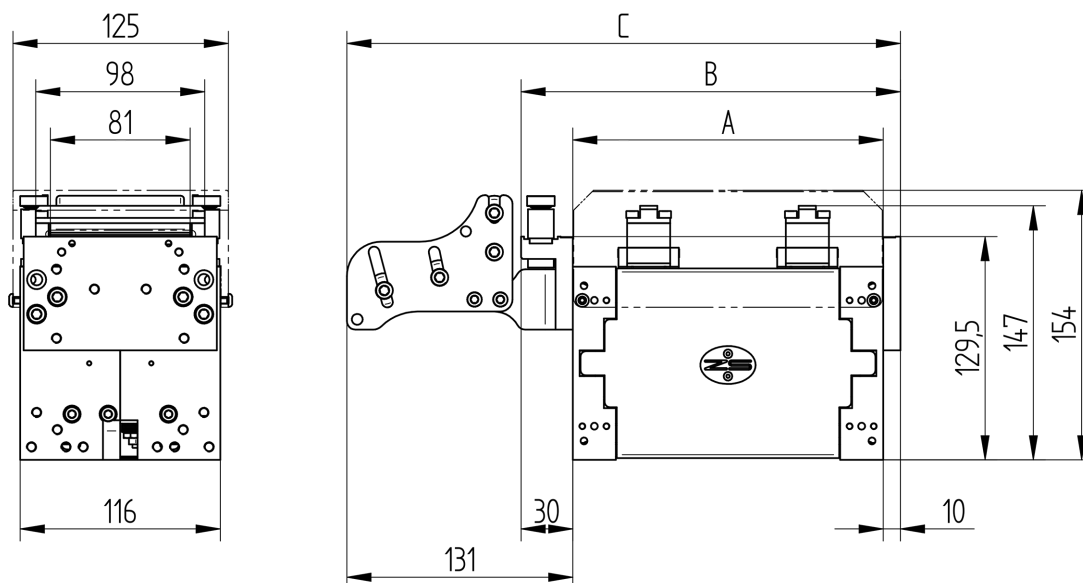
0.5 kg / 4 clamps

2 kg / 4 clamps

2 kg / 2 clamps

*Calculation basis: EZ KX-D 080
Optimum opening angle

TECHNICAL SPECIFICATIONS



MODEL	EZ	KX-C 080	KX-D 080
Bandwidth max. (mm)		80	
Feed length max. (mm)		2x19 / 38	2x85 / 170
A: Length basic unit (mm)		180	310
B: Length with inlet plate (mm)		220	350
C: Length with roll basket type D (mm)		321	451
Clamp opening		ca. 1 mm	
Genauigkeit (mm)		+/- 0,02	+/- 0,01
Nominal traction force (N)		60	65
Peak traction force, approx. (N)		100	140
Cross section (recommended)		max. 50 mm ²	
Clamping force at 6 bar		270 N	

SWITZERLAND

Zehnder & Sommer AG
CH-3400 Burgdorf
info@zehndersommer.com
Tel +41 31 800 00 00

GERMANY

Zehnder & Sommer GmbH
DE-58452 Witten
info@zehndersommer.de
Tel +49 2302 981 60 30

zehndersommer.com
ZSswiss.com