

# Pneumatic Clamp Feeder

## J 450

### 2000 mm<sup>2</sup> strip cross-section

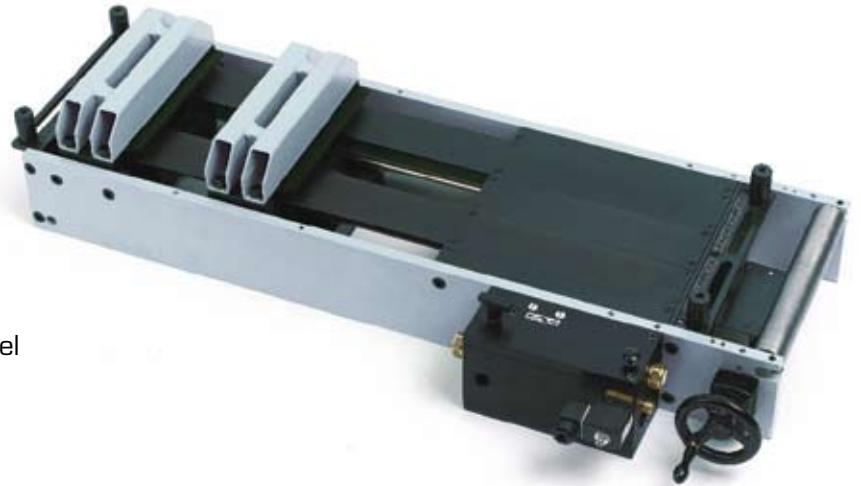
- Clamping force at 6 bar: 12.2 kN
- Tractive force at 6 bar: 2.9 kN

#### Scope of delivery

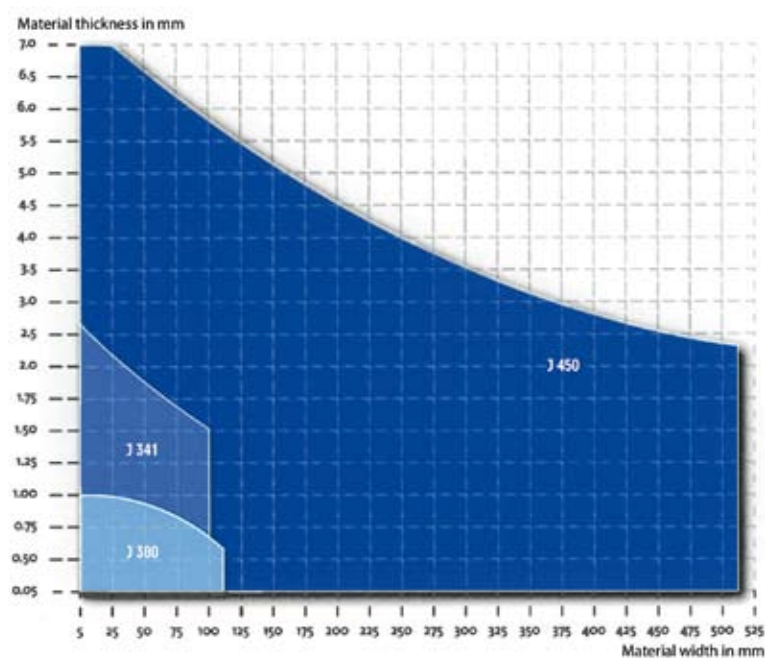
- Feeder complete with cover hood
- Control block with solenoid valve
- Clamping elements made of ground steel

#### Options

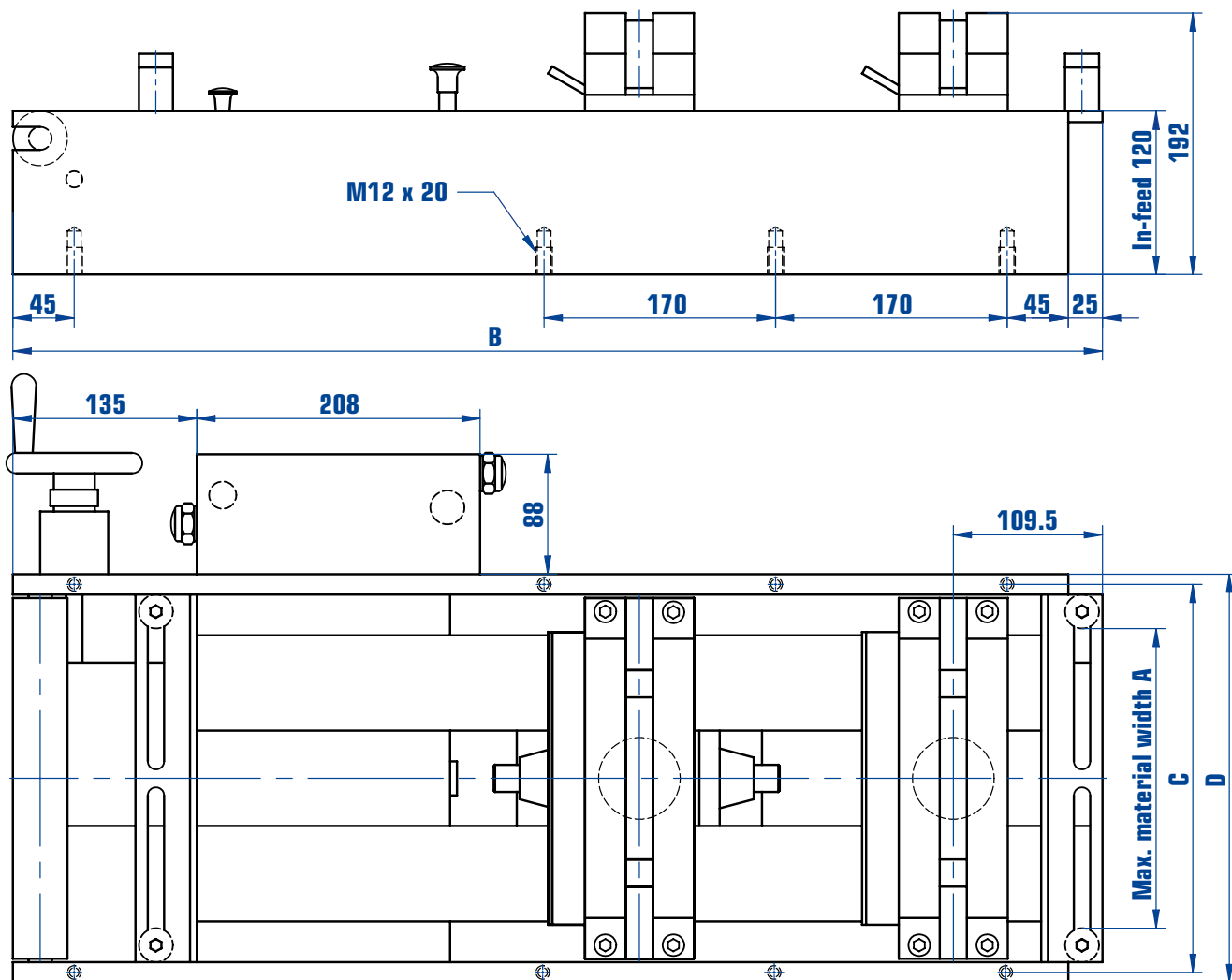
- Pilot release
- Mounting bracket including support foot
- Ribbed or nylon clamping elements



Performance diagram



*Technical modifications subject to change. Performance data depends on material.*



Model order number	Stroke	A	B	C	D	Max. frequency non-load per min.	Air consumption per switch play
J 450.12...	0 - 120	220 - 520	800	285 - 585	300 - 600	145/min.	8 l
J 450.22...	0 - 220	220 - 520	1000	285 - 585	300 - 600	120/min.	14 l
J 450.32...	0 - 320	220 - 520	1200	285 - 585	300 - 600	95/min.	19 l
J 450.42...	0 - 420	220 - 520	1400	285 - 585	300 - 600	70/min.	25 l
J 450.52...	0 - 520	220 - 520	1600	285 - 585	300 - 600	45/min.	31 l

Technical modifications subject to change. Performance data depends on material.